



*Energy Saving Design  
for a Greener Future*



# 2011

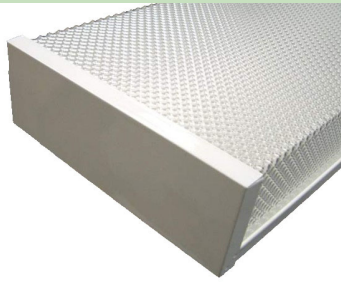
CATALOG



FLUORESCENT FIXTURES

WRAPAROUND FIXTURES

6" WRAPAROUND  
FIXTURES



Model #

Features:

**J6WRAP2/40RS12LPF-TP**

2 x 40W, Magnetic Ballast, 120V 60Hz, Low Power Factor

**J6WRAP2/32-40IS120LPF-TP**

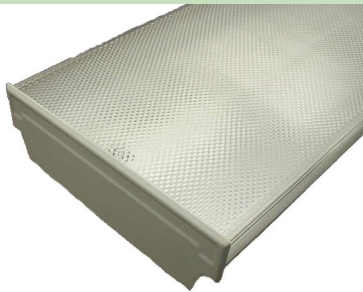
2 X 32W-40W, Electronic Ballast, 120V 50/60Hz, Low Power Factor

**Other Features and Applications:**

- Housing & End Cap: CRS 0.4mm White Powder Coated
- Ballast Channel: CRS 0.5mm White Powder Coated
- Diffuser: #12 Acrylic Prismatic Lens, 1~2.5mm thick
- Surface mounting
- Product Size: 48-3/4" x 6-1/2" x 2-3/4" (LxWxH)
- Packaging size: 50-3/8" x 7-7/8" x 3-3/16"
- UL, cUL listed



7.5" WRAPAROUND  
FIXTURES



Model #

Features:

**J7WRAP**

Housing Only with Acrylic Prismatic Lens/ No Lamp or Ballast

**J7WRAP2/40RS12LPF-TP**

2 x 40W, Magnetic Ballast, 120V 60Hz, Low Power Factor

**J7WRAP2/32-40IS120LPF-TP**

2 X 32W-40W, Electronic Ballast, 120V 50/60Hz, Low Power Factor

**Other Features and Applications:**

- Housing: CRS 0.6mm and End Cap: CRS 0.7mm White Powder Coated
- Ballast Channel: CRS 0.4mm White Powder Coated
- Diffuser: Acrylic Prismatic Lens bottom and linear side reflector
- Low Profile, Surface mounting
- Product Size: 48" x 7-1/2" x 2-1/2" (LxWxH)
- Packaging size: 49-3/4" x 9" x 3-3/4"
- UL, cUL listed



9" WRAPAROUND  
FIXTURES



Model #

Features:

**J9WRAP**

Housing Only with Acrylic Prismatic Lens/ No Lamp or Ballast

**J9WRAP2/32-40IS120LPF-TP**

2 X 32W-40W, Electronic Ballast, 120V 50/60Hz, Low Power Factor

**J9WRAP2/17-20IS120LPF-TP**

2 X 17W-20W, Electronic Ballast, 120V 50/60Hz, Low Power Factor

**Other Features and Applications:**

- Housing: CRS 0.7mm and End Cap: CRS 0.7mm White Powder Coated
- Ballast Channel: CRS 0.5mm White Powder Coated
- Diffuser: Acrylic Prismatic Lens bottom and linear side reflector
- Low Profile, Surface mounting
- Self Centering Lens is supported the entire length and can be hinged down from wither side for easy maintenance
- Product Size: 48" x 9" x 3" (LxWxH)
- Packaging size: 49-3/4" x 9-3/4" x 3-1/2"
- UL, cUL listed

2FT Model



12" WRAPAROUND  
FIXTURES



Model #

Features:

**J12WRAP4/32ISMV-TP**

4 x 32W T8, Electronic Ballast, 120-277V 50/60Hz, High Power Factor

**Other Features and Applications:**

- Housing: CRS 0.7mm and End Cap: CRS 0.7mm White Powder Coated
- Ballast Channel: CRS 0.5mm White Powder Coated
- Diffuser: Acrylic Prismatic Lens bottom and linear side reflector
- Low Profile, Surface mounting
- Self Centering Lens is supported the entire length and can be hinged down from wither side for easy maintenance
- Product Size: 49.-1/4" x 13-1/4" x 3-1/2" (LxWxH)
- Packaging size: 49-3/4" x 13-3/4" x 3-1/2"
- UL, cUL listed



LAY-IN TROFFERS



2 x 2



2 x 4

**Model #**

**Features:**

**JGT22-4/17ISMV-A12** 2' X 2', 4 X 17W, 120-277V, 50/60Hz, High Power Factor, Acrylic A-12 Reflector

**JGT24-4/32ISMV-A12** 2' x 4', 4 x 32W, 120-277V, 50/60Hz, High Power Factor, Acrylic A-12 Reflector

**Other Features and Applications:**

- High Performance
- T8 Luminaire Provides General Illumination for Recessed Applications
- Innovative Low-Profile Design Optimized around T8 Lamps, Low Profile Electronic Ballasts and T8 Compact Sockets
- Integral T-bar Safety Clips are Standard—no need to install separate clips
- UL Approved



PARABOLIC TROFFERS



2 x 2



2 x 4

**Model #**

**Features:**

**UN-WIRED MODELS**

**JPT22-2/32U/9CELL**

2' X 2' 9-Cell Parabolic Body Only for use with 2x32W T8 or 2 x 40W T12 U-Tubes (9-Cell 4-T8 Sockets Included)

**JPT24-3/32/18CELL**

2' X 4' 18-Cell Parabolic Body Only for use with 3x32W T8 or 3 x 40W T12 Tubes (18-Cell 6-T8 Sockets Included)

**WIRED MODELS**

**JPT22-2/32UISMV/9CELL**

2' X 2', 2 X 32W T8 U-Tubes , 120-277V, 50/60Hz, High Power Factor, (9-Cell 4-T8 Sockets Included)

**JPT24-3/32ISMV/18CELL**

2' X 4', 3 x32W T8, 120-277V, 50/60Hz, High Power Factor, (18-Cell 6-T8 Sockets Included)

**Other Features and Applications:**

- High Performance
- T8 Luminaire Provides General Illumination for Recessed Applications
- Innovative Low-Profile Design Optimized around T8 Lamps, Low Profile Electronic Ballasts and T8 Compact Sockets
- Integral T-bar Safety Clips are Standard—no need to install separate clips
- UL Approved



INDIRECT FIXTURES



2 x 2



2 x 4

Model #

Features:

UN-WIRED MODELS

JID22-3/40TT5-KIT

2' X 2' Fixture / 1, 2 or 3 CF40 40W TT5, 2G11 Base

JID24-3/54T5HO-KIT

2' X 4' Fixture / 1, 2 or 3 54WT5HO, G5 Base

Other Features and Applications:

- For use in general lighting for large spaces with high ceilings
- The asymmetrical styles delivers uniform vertical illumination
- The optimum mix of directional and diffuse reflected light produces balanced illumination
- Shielding pivot and swing down for easy lamp access
- Injection-molded plastic light traps prevent light leaks
- No ballasts or sockets included

STRIP FIXTURES



1-LIGHT



2-LIGHT

Model #

Features:

J1/17-20RS120STRIP

1-Light / 17-20W, (1) F15T8 or F20T12, 120V, 50/60Hz, Electronic Ballast

J1/32-40RS120STRIP

1-Light / 32-40W, (1) F17/25/32T8 or F40T12, 50/60Hz, Electronic Ballast

J2/17RS120STRIP

2-Light / 17-20W, (1) F15T8 or F20T12, 120V, 50/60Hz, Electronic Ballast

J1/32-40RS120STRIP

2-Light / 32-40W, (1) F17/25/32T8 or F40T12, 50/60Hz, Electronic Ballast

Other Features and Applications:

- Housing & End Cap: CRS 0.4mm White Powder Coated
- Heavy-duty 20-gauge steel utilized through out for durability body and code compliance.
- All welded assembly and post painted for maximum operating life.
- Pretreated with five-stage iron phosphate process ensures superior paint adhesion.
- Painted high-gloss baked white enamel.
- Shallow design is ideal for commercial and industrial spaces requiring general illumination.
- Suitable for dry and damp environments.
- Thermally protected, self re-setting, Class P, NPF, non-PCB and UL Listed ballast.
- Suitable for surface mounting.
- Individual or continuous row mounting.
- Light weight design enables easier installation and increases worker productivity.
- LISTING: UL / C-UL listed to US and Canadian standards.
- WARRANTY: Guaranteed for one year against mechanical defects.

