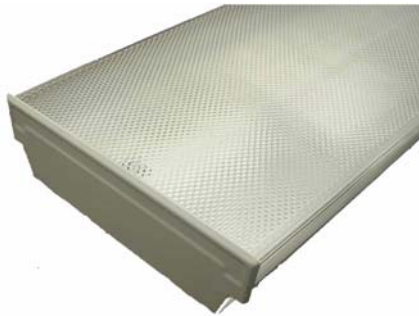




7-1/2" WRAP FIXTURE



CONSTRUCTION

- Housing: CRS 0.6mm End Cap: CRS 0.7mm White Powder Coated
- Ballast Channel: CRS 0.4mm White Powder Coated
- Packaging size: 49-3/4" x 9" x 3-3/4"
- UL, cUL listed

ELECTRICAL CHARACTERISTICS

Model #	Description
J7WRAP	Low profile Surface Mounting / Acrylic Prismatic Lens 1~2.5mm Thick

PRODUCT DIMENSIONS

Length	Width	Height
48"	7 1/2"	2 1/2"

PACKING INFORMATION

Pcs/Ctn	Weight/Ctn	Cube/Ctn
1 pc.	11.55 lbs.	0.84

