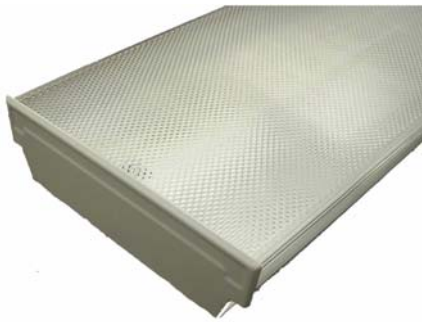




7-1/2" WRAP FIXTURE (WIRED)



CONSTRUCTION

- Housing: CRS 0.6mm End Cap: CRS 0.7mm White Powder Coated
- Ballast Channel: CRS 0.4mm White Powder Coated
- Diffuser: Acrylic Prismatic lens bottom and linear side reflector
- Low Profile, Surface mounting
- Packaging size: 49-3/4" x 9" x 3-3/4"
- UL, cUL listed

ELECTRICAL CHARACTERISTICS

Model #	Wattage	Voltage	Ballast Type	Power Factor
J7WRAP2/4ORSI20LPF-TP	2 x 40W	120V	Magnetic	LPF
J7WRAP2/32ISI20LPF-TP	2 x 32W	120V 50/60Hz	Electronic	LPF

PRODUCT DIMENSIONS

Model #	Length	Width	Height
J7WRAP2/4ORSI20LPF-TP	48"	7 1/2"	2 1/2"
J7WRAP2/32ISI20LPF-TP	48"	7 1/2"	2 1/2"

PACKING INFORMATION

Model#	Pcs/Ctn	Weight/Ctn	Cube/Ctn
J7WRAP2/4ORSI20LPF-TP	1 pc.	11.55 lbs.	0.84
J7WRAP2/32ISI20LPF-TP	1 pc.	9.13 lbs.	0.84

